

FOLIO TWO

Europlanters

Inside: a showcase of their latest projects



A 60s Post Office building given a new lease of life

EUROPLANTERS



dw



Over 30 successful years in the GRP business

My passion for fibreglass began in childhood, making canoes at Uppingham School, Oakham.

Evolving from this love, in 1990, Europlanters was established, and even through continued global economic uncertainty, it has grown and now employs almost 50 local people.

Europlanters are the leading British manufacturer of Glass Reinforced Plastic (GRP) planters and we are proud to announce over 30 successful years in business.

Based in Stockport, Cheshire, Europlanters has grown from strength to strength. Our achievements in the industry have been publicised worldwide as we have worked hard to consistently deliver high quality products, even during the pandemic.

In 2019 Europlanters moved to much larger premises, a 28,000 ft² state of the art factory; housing offices, production areas, warehousing, industrial spray booths and ovens.

The manufacturing workforce has also grown in line with the site; with additional management personnel, full-time production staff, estimators, architects and office staff supplementing our existing team - some of whom have been with the company from the start.

We collaborate with garden designers, landscapers, architects and gardening enthusiasts to create a variety of landscape schemes. We have had some challenging and exciting projects over the years and have thoroughly enjoyed working with all our clients to ensure their visions come to realisation, in line with budgets and time scales.

In this Folio we proudly reflect on just a few projects we have recently accomplished and thank those who have supported and driven our company forward into the future.



0161 449 7900
sales@europlanters.com

www.europlanters.com
Europlanters Ltd
Unit 9, Far Cromwell Road,
Bredbury, Stockport,
Cheshire SK6 2SE

FOLIO TWO

Regulars

3 Editorial
Over 30 years in business

32 The weird and the wonderful
Not just planters



54 Ask an architect
An interview with a leading architect

Features

10

Sustainability

More and more people are asking if our planters are environmentally friendly - spoiler alert, they are!



28

CPD

Engaging and essential sessions



20

The cloud gardener

How gardening supports mental health

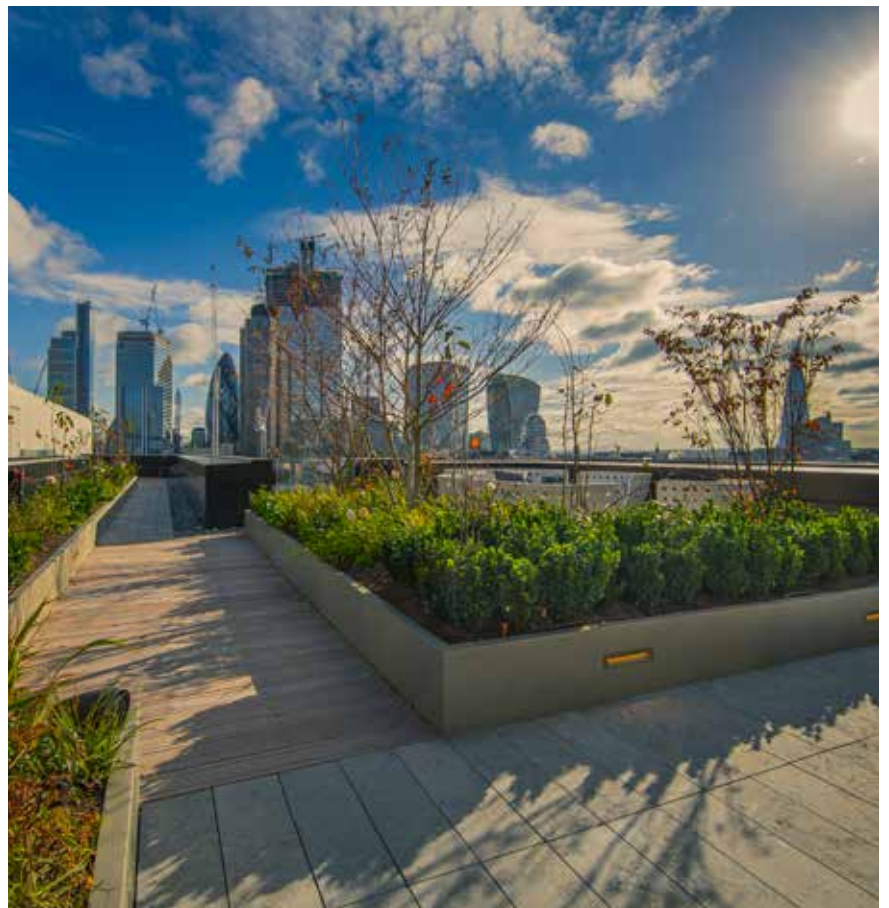
47

Are GRP planters fire resistant?

Knowledge of their fire performance is becoming a significant issue for many landscape architects.

Projects

- 6** **London Wall Place**
The queen opens new building in financial district
- 12** **Charlotte Street**
A new lease of life for a 60s Post Office building
- 18** **Bollo Lane**
Two landscaped rooftop terraces with generous views of London
- 22** **LCFC**
A major off-field investment
- 30** **Clerkenwell**
Former gin distillery fuses art with architecture
- 35** **Turing Locke**
Quirky curved shaped planters help create a soft barrier in Cambridge
- 44** **Post Building**
Workplace benchmark set to become an icon
- 48** **Alderley Edge**
Stunning views from domestic roof terrace renovation
- 52** **Bishopsgate**
One of Spitalfields most environmentally and socially responsible workplaces
- 56** **Best of the rest**
A selection of smaller projects



London Wall Place

Queen opens new headquarters for multi-national asset management company.

Sitting within Roman relics of the city's original London wall, with remnants of the medieval church, St Alphages, is an acre of public realm with curved and winding elevated walkways that link the two buildings at London Wall Place.

The two office blocks total a space of 500,000 ft² a space for some 5,000 employees. One London Wall Place

stands 12 storeys high whilst Two London Wall Place, the highest of the two, stands 16 storeys high.

Europlanters have been privileged to work alongside Frosts Landscapes on One London Wall Place and its landscaping on nine terraces over seven floors. This included two wildflower green roofs, one 427m² and another 120m². The project required 406 large planters to create various shaped planting beds and 161 hidden storage benches on the several levels.

To complete the project over 2t of resin and 400L

of paint were used for the planters alone and more than 500m of iroko timber to clad the benches.

Terraces were carefully designed with nature and wellbeing of the staff at the centre. Designed with large break out areas for staff to work and enjoy the views of the city's skyline, whilst also enjoying the benefits of natural surroundings.

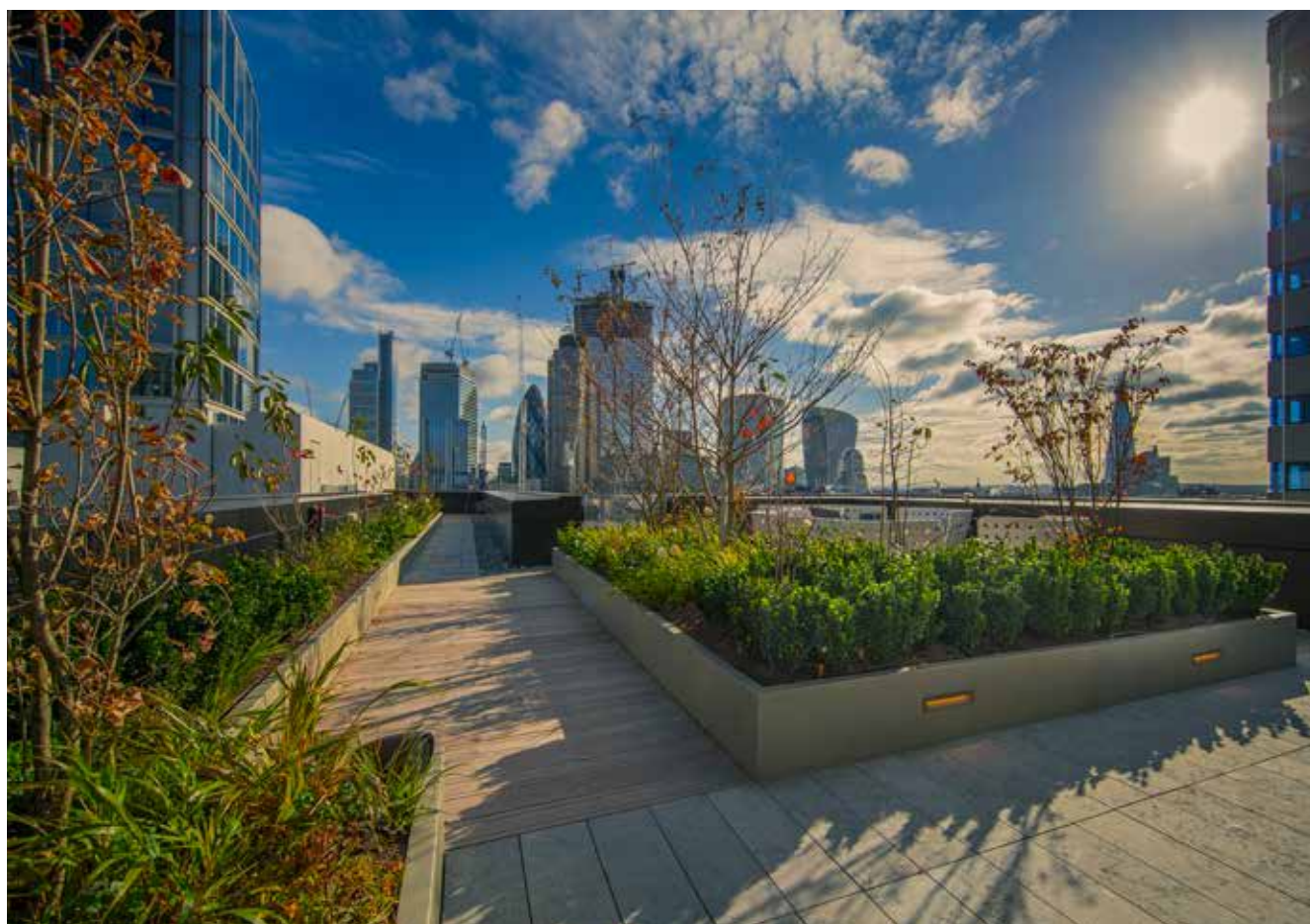
Some planters were fitted with lighting to add ambience in the summer evenings and sprayed in RAL 7048, a metallic finish to compliment the building.

Having been inspired by stacks of wood in a timber yard, landscape architects, Townshend, designed the benches. Clad

in iroko, these also had sockets fitted for charging laptops and phones.

The project required 406 large planters using over 2t of resin and 400L of paint





The project took several months to complete and was opened by HRH Queen Elizabeth II. Having completed a tour of the new offices, the Queen told traders she was impressed by the views from the 10th floor and joked that they would "distract the staff".



WATCH ON







We care passionately about
the environment... just like we
care about our planters.

Sustainability

Recently more and more people are asking us if our products are environmentally friendly.

Our planters are extremely popular as they are lightweight, durable, frost proof, rust proof and made from cost-effective materials

As part of our commitment to work towards a more sustainable future, Europlanters can use a brand new waste reducing "green resin". For every 220kg drum of green resin used, we recycle approximately 1800 waste plastic bottles. Consequently, the average planter made from this resin contains roughly 34 plastic bottles. This green technology of putting recyclable materials into our products saves natural resources, energy and lowers greenhouse emissions. In addition, the green resin we use does not contain any deforestation causing bio products e.g. palm oil.

One of the hot topics currently is the sustainability of plastics. The glass and resin combined in GRP products are much stronger than other plastics, this means they will not break down in the same way and therefore can be seen as a more sustainable option.

Many GRP products have a lifespan of over 50 years and, in some cases, over 100 years. This is why Europlanters confidently give a 10-year guarantee on all their GRP products. Which is not only better for the environment but business budgets too.

A huge problem in most other manufacturing industries is the processing of certain materials can create harmful by-products and it's these by-products that create air pollution, generating a toxic environment for everyone. For example, most metals tend to have massive impact on the environment because of the air pollution caused during manufacture. They simply aren't eco-friendly. Europlanters GRP products are not made by machines; they are hand made. So, one of the benefits of choosing GRP over other

materials, such as metal, is it doesn't create huge smoke clouds or other toxic air pollutants. In comparison to many other materials, the production of GRP is benign, this is because the fabrication of GRP planters does not have the same environmental impact as metals such as steel.

The lightweight properties of GRP not only make it easy to manoeuvre, but also makes transportation more fuel efficient compared to heavy pottery or metal.

Our team members are educated about the environmental impact of their work and they know how to work in an eco-friendly manner. We continually assess methods, products and packaging our company uses to ensure there are eco-friendly options within your budget.

There are many things we can all do to reduce our carbon foot-print and our impact on the environment, by choosing Europlanters GRP planters for your project, you're off to a good start!

Charlotte Street

Europlanters help a 1960s former Post Office Building get a new lease of life

80 Charlotte Street, is a major mixed-use development in the heart of London's Fitzrovia redeveloped by Overbury Plc.

This regenerated building occupies an urban block with the adjacent Asta House, delivering over 320,000 ft² of workspace, 55 new apartments, a café, a restaurant and the new Poets Park on Chitty Street.

The main block was originally built in the 1960's as the Post Office headquarters with the new building now three floors higher than the original. This takes the building from 7 to 10 storeys high and links the floors to make one building, now 90m². The architecture imaginatively combines the existing fabric of the building with new-build elements and is characterised by the various facade treatments and terraces.

The new levels are set back to reduce their size, providing the terraces with unrivalled views over Fitzrovia, the nearby BT



Tower and out towards the City and river.

Europlanters worked closely with MA Design and Barton Willmore Landscape Architects to design and build more than 300 large planters, which created the planting beds and 45m of seating for the new terraces.

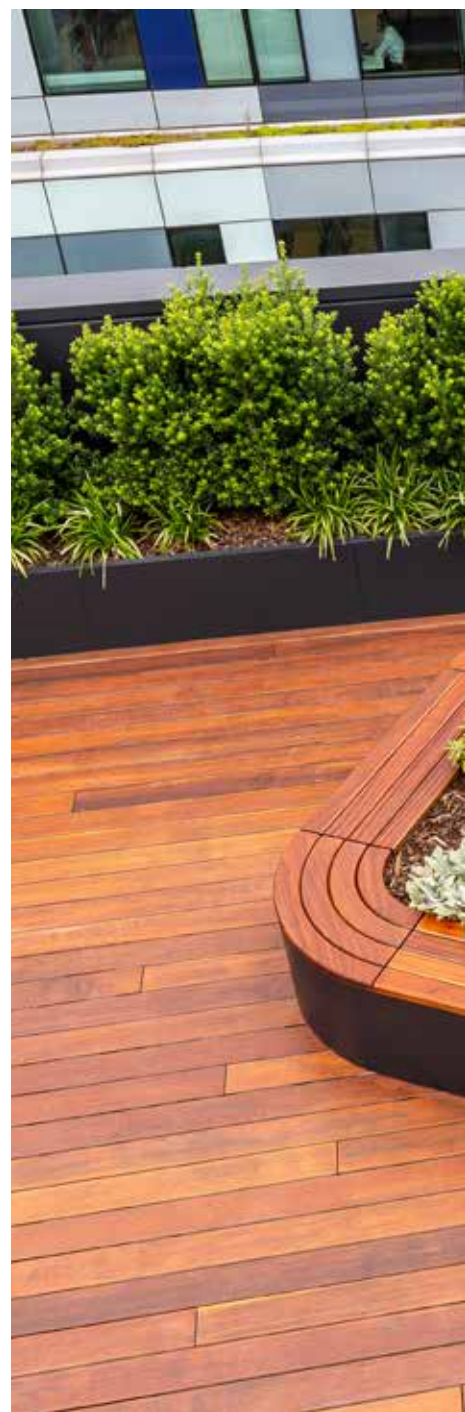
The integrated benches were precisely cut to curve at the corners and made from sapele timber.

The GRP planters and benches were finished to compliment the building exterior and the timber decking.

Each of the planting beds were then superbly planted up by Oasis Plants.

The ground floor has been designed to act as more than a commercial reception, offering space for tenants to use for events and social activities.

An island café-bar caters for both tenants and the public. Tenants and guests can also take a dedicated lift to the roof terrace, where a second bar benefits from stunning views across North London and the City.





The new building is now three floors higher than the original.





WATCH ON



Europlo



www.europlanters.com

anters

Stand the test
of time



Bollo Lane

Standing 14 storeys high in the heart of West London, Bollo Lane is home to 112 new apartments all with expansive outdoor communal areas.

Europlanters were specified to manufacture seating, benches and planters on the spacious, 3rd and 8th floor landscaped terraces.

Residents can sit, relax and enjoy the panoramic views towards central London, Chiswick Park and the Gunnersbury Triangle nature reserve or simply watch the sun set over the city.

The design of the communal roof terraces has been made to encourage interaction, meaning the many faces in the building will soon become familiar as people gather on roof terraces for drinks and socialising.

Europlanters were commissioned to manufacture a newly designed triangular seat, Bench 17, and worked closely with PRP Architects and their client to produce the bench with the similarly designed Bowdon planter.

Large planting beds were fitted together with sapele timber seating which were used to create different outdoor "rooms".

52 linear metres of timber seating was fitted to the planters over the two large roof terraces. In addition to the multiple benches, four chunky, triangular timber seats Bench 17 were made with Bowdon triangular planters to compliment them.

A total of 67 large GRP planters were manufactured and sprayed in satin black to contrast with the building. All planters were made ahead of schedule and then fitted with sapele timber seating.

'We discussed this project 3 years ago with the architects, PRP ' said John Wilkes Director of Europlanters, 'and it is wonderful to see it come to fruition'.

Europlanters worked together with other sub-contractors to ensure all aspects of the design were coordinated and met the brief in full. Working from the architects concept drawings, we carried out the final detailed design, creating a full set of manufacture drawings which were then approved by the contractor, Donban.





WATCH ON





The Cloud Gardener

We are all aware that living through the uncertain circumstances of the Covid-19 pandemic, how it affected people's mental health and how social media news feeds created far more anxiety than people needed. However, there have been many research studies to suggest that living within close proximity to green infrastructure is beneficial to mental health and this became even more prominent during lockdown.

Jason Williams, a Manchester former bar manager who was furloughed during the strict home confinement imposed on

us all, struggled with his mental health. He had recently moved to a flat on the 18th floor in the city centre and as a distraction to what was going on in the



a lush urban oasis. When taking day trips walking to the garden centre, he realised just how important the outside space was, and began his happy escape by creating a balcony garden. Tending to his garden helped Jason to deal with

world, he decided to take up gardening to brighten up his balcony. What started with a single marigold soon became

his anxiety and depression, by needing to ensure that his plants were fed and watered, giving him a reason to get up in a morning.

Jason spent the following months developing his green fingers and becoming more self-sufficient. Growing food for himself and documenting his journey with YouTube videos, he grew his own fruit and vegetables, converted his household waste into compost as well as using water from his small fishpond as organic fertiliser.

Being on the 18th floor, he soon realised that it is very windy and due to the balcony's glass balustrade on sunny days it can be up to 15 degrees higher in temperature than at ground level. So one of the biggest challenges for Jason was figuring out what plants would thrive on his high-rise balcony.



Another mission was, being so high up, there was a need to create his own eco system to aid with the pollination of his plants so he created this by introducing lace wing larvae.

During lockdown 35-year-old Jason also took time to reflect, he had been working circa 70 hours a week and feeling continually worn out. He therefore decided to leave what he felt was a toxic work environment and do something he'd began to love, gardening and so The Cloud Gardener was born.

Two years on in this incredible journey Jason won a place at one of the most famous flower shows in the world, RHS Chelsea Flower Show in the new category small balcony and container gardens.

When he applied for Chelsea Jason stressed that he wanted his show garden to be accessible "to show what can be done in a realistic way". His target audience was "people who would never even think about Chelsea". Hoping that his garden would inspire young, budding designers, and

would give them the belief that they too could appear at Chelsea.

"It's about making the right choices and working out what is going to suit my space. My garden isn't picture perfect. Sometimes things don't go well, it's important to learn from your mistakes."

Jason designed the award winning, he achieved a Silver Gilt Medal, Cirrus Garden based on his own high rise balcony and he talked to visitors, including HRH The Queen about the various challenges this brings.

The name Cirrus Garden was taken from cirrus clouds which are the highest clouds in our atmosphere.

The colours were based on an image of a sunset seen from Jason's balcony. The planting scheme consisted of a mixture of wildflowers, herbs, salads, vegetables, cut flowers and a fish pond to fertilise the garden.

Europlanters worked with Jason to help create his vision of the Cirrus

Garden. Manufacturing the bright planters, troughs and window boxes in red, orange and yellow. It was wonderful to see how the colours of the garden popped against the skyline and how the plants made the whole thing come alive, observed John Wilkes on returning from RHS Chelsea Flower Show.

Jason hopes that The Cirrus Garden will act like a beacon of hope to anyone like himself who struggles with mental health, and show them that anything is possible.

Appearing on Gardeners World and many other TV shows nationwide, Jason wants to challenge the idea that black people don't garden, 'We do. You just don't tend to see it on TV, as there is not much representation, especially of young, black males.' said Jason in the hope that this will change in the not-too-distant future.

We certainly want to see more of Jason and his fabulous enthusiasm for gardening on TV.



The LCFC Training Facility

A major off-field investment.

Leicester City Football Club had a major off-field investment plan in the shape of a new state-of-the-art training ground.

The building, designed to offer facilities that rival any in the world, was a bid to help attract top players to the East Midlands and see Leicester's progress as a club.

KSS Architects, who designed the impressive plans for City's new training facility in Seagrave, created something to reflect the owners' ambition to keep the Club competing at the very highest level.

The project on the 185 acre site, included the construction of 21 playing surfaces including 14 full-size pitches.

7,140t of grass seed were used to give life to the array of pitches along with 75,000t of root-zone (highly versatile soil) which was applied to all grass pitches.

A show pitch was built with a 500-seat stand to host matches on a regular basis for the academy teams to play in a match environment.

A full-size indoor pitch based in a signature building that moulds into the landscape forms the centrepiece of the development. This building is used as an integrated training centre for first-team and academy squads. Inside includes fitness and hydrotherapy suites,

rehabilitation areas and dining facilities.

There is also a 9-hole recreational golf course and sports turf academy with facilities to train the next generation of elite ground staff.

The main training centre building also includes 35 bedrooms so players can stay at the site.

Off pitch 21,593 new trees including conifers, have been planted across the site with 18,548 new climbers and shrubs throughout the training ground's land. 86,000m² of seeds have been planted all of which

to attract the abundance of natural wild life in the area providing a safe habitat for the indigenous species.

Europlanters manufactured and installed 600m² raised planters in corten effect finish to compliment the contemporary building.

Benches on angular planters were also manufactured and installed by Europlanters on the two large terraces overlooking the grounds.

The seven-building complex includes a dedication to Vichai with the administrative and medical hub named after the late owner.

The facility seeks to combine the best practice in elite sports training with a celebration of The Foxes culture and ethos.

Many of the planters are being used for growing herbs and vegetables.



WATCH ON







*86,000m² of seeds
have been planted
to encourage
wildlife*



A blurred child in a dark t-shirt and blue shorts is running from left to right across a green lawn. In the foreground, a tall, white, cylindrical planter holds a clump of tall, thin grass. The background is filled with out-of-focus green trees and foliage under bright daylight.

E u r o p l

P l a

We never know what people will use our GRP planters

a n t e r s



nters for goalposts
for, so it's a good job they have a 10 year guarantee

Customised Continual Professional Development by Europlanters.



CPD

We recognise that being a member of a professional body brings with it responsibilities, and part of those commitments are approximately 35 hours continual professional development a year.

If you are looking for design inspiration, Europlanters is here to support you.

We have a wealth of experience in GRP products and our training will assist you to understand the benefits of using GRP to give you confidence when specifying our products to anyone who may require planters and street furniture.

We deliver engaging and essential CPD sessions for architects, professional garden designers and landscape architects.

On the day we will talk you through our product specification packs.

Training sessions can be held at our premises in Stockport, Cheshire, or we can travel to your site or offices.

Please contact us today for more information or to book a CPD session with one of our experts.



Clerkenwell

Fusing art and architecture.

Europlanters worked closely with Town and Country Gardens on Laser House, the refurbishment of a former gin distillery and print works in Clerkenwell, London.

The aim of the project was to fuse art and architecture, creating more than 8,000m² of office, restaurant and retail space for creative industries.

Located between the Barbican and Clerkenwell in London's most exciting creative sector, the six story Laser House has been dramatically re-imagined to accommodate more than 850 people.

When planning permission was originally applied for there was an issue with neighbours concerned about their privacy and the new build blocking out their light. This was finally resolved by adding smoked glass panels to the planters on the perimeter of the building. This allowed light to shine through and permitted the neighbours to keep their space private.

Ten large bespoke planters in RAL 3004 were installed in the courtyard and 42 large bespoke GRP planters clad with timber slats were situated on the 3rd and 4th floors.

The original building has been largely preserved, with construction of extensions fronting Goswell Road and Pear Tree Street. A new entrance lobby and private gallery was topped with 10,000m² of green roof on the terrace above.



WATCH ON





The weird and

Europlanters just wouldn't be Europlanters without a bit of eccentricity.

If our clients can envisage it, we can create it!

We have been asked to manufacture some fascinating items: giant frogs, life sized cows, enormous hats, safari parks to name but a few.

Although these things can be quite typical for us, it is weird and wonderful nevertheless!

So let your imagination go wild and test our talented team with your ideas, you might be surprised by what can be achieved.



the wonderful...



*"With great planters
come great responsibility"*



Turing Locke

Quirky curved shaped planters help create a soft barrier.

Located just two miles from the centre of Cambridge in the thriving new university district of Eddington, is the sustainable Hyatt Centric Hotel, Turing Locke.

This facility provides 150 rooms, plus 180 Locke apart-hotel rooms, arranged around a central courtyard garden, named after computer scientist Alan Turing.

The four-storey building includes a restaurant, bar, café, co-working spaces and a gym. The grounds of the hotel accommodate a large courtyard, podium

terraces and under-croft spaces.

The apart-hotel has been designed by Sterling Prize winning architects dRMM, and its interiors, including one and two-bedroom suites up to 74m², have been created by design studio AvroKO.

The landscaping was designed by Robert Myers

Associates and beautifully landscaped by Frosts Landscape Construction.

Europlanters are proud to have been involved in the manufacture and installation of numerous planters and planter benches, including four large sculptural planters with a huge surround of timber seating outside the hotel on Turing Way.



This was designed to help segregate pedestrians from cyclists. The sizes ranged from 3x4m² to 5x6m², each one being carefully constructed in the factory to ensure they fitted together perfectly on site.

Further planters, by Europlanters, were manufactured and installed on the podium terrace, a series of gardens made from GRP in quirky curved shapes. These were planted with mixed planting to create a soft barrier in between the balconies of the more deluxe suites. Each of these terraces had a view to the leafy courtyard below.

Beneath the hotel in the under-croft, is an array of granite effect Eyam planters which subdivide the space creating places to relax.

The large planting beds, sculptural bench planters and loungers were sprayed in RAL 7016, in a matt finish, to compliment the building,

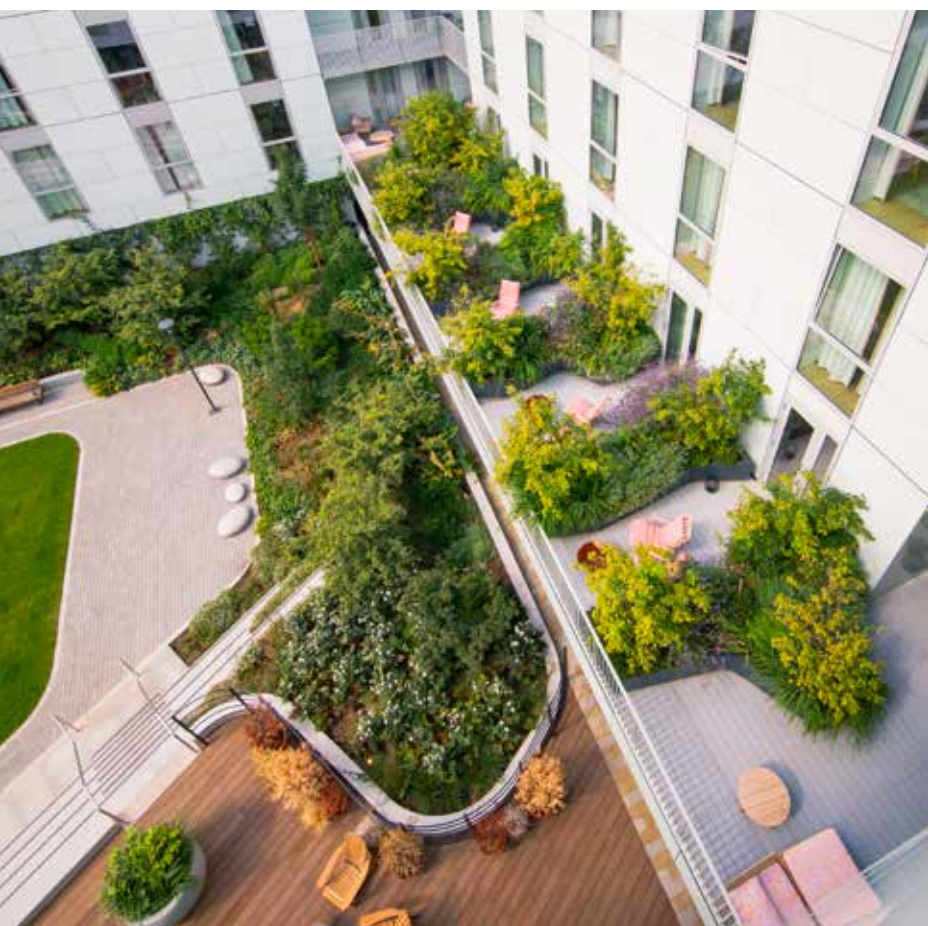
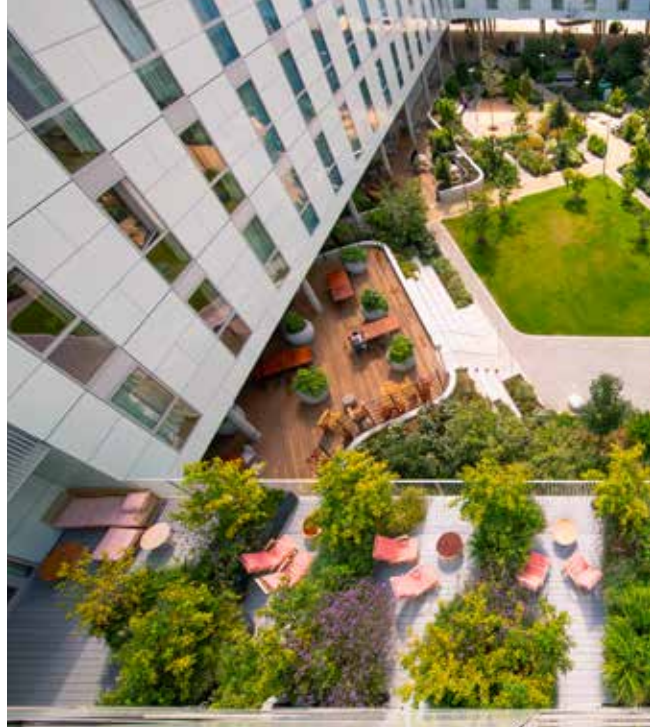
the timber used for the loungers and benches was sapele.

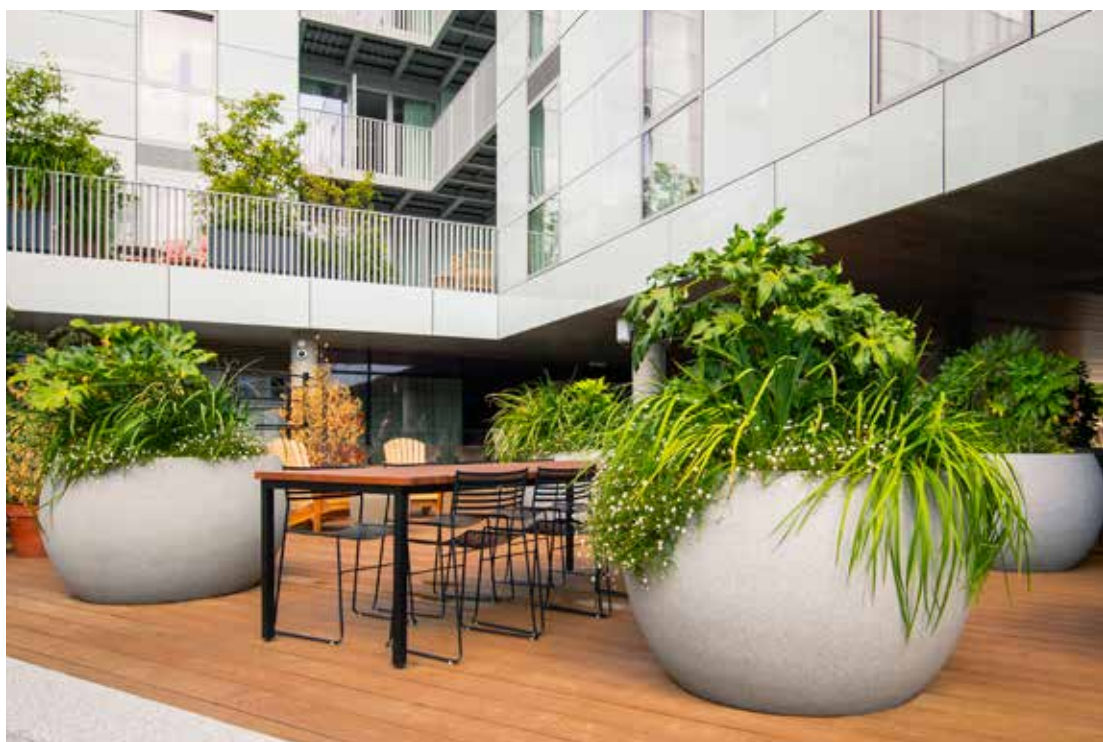
To create the ambient surroundings each sculptural planter had integrated LED Lighting. Originally the project was specified in metal, however, due to the LED recess required underneath the curved planters, special tooling would have had to be manufactured before production could proceed. GRP eventually was the most cost effective option, in fact the only option that would keep the project within budget.

Interesting shapes and planting textures were used to create eye-catching soft barriers



WATCH ON





Planter and stand combos from Europlanters.

Want to add plants to your home or office but have little space? Europlanters have the perfect solution. Their new planter and stand combos add a fantastic statement piece to your room and turn it into an indoor garden at the same time.

Not only are these plant stands aesthetically pleasing they also offer a fun way to show off your indoor gardening skills, whilst the lush green plants they display will detoxify polluted air and regulate humidity. Mental health experts suggest that caring for plants is also stress relieving and a way to introduce mindfulness into your life.

'We wanted to offer a durable combination of materials, so chose a metal powder coated frame for the stands to go with some of the GRP planters from our current range. This makes the combos more cost effective.' said John Wilkes Director of Europlanters. 'and the result is a show stopping combination.'

Europlanters have designed a wide range of multi-tiered plantstands to go with design led, geometric designs and smaller planter and stand combos. The range is so versatile there's something to suit every space.

The taller versions extrude elegance and look fabulous with trailing plants while The Oakley broad is a more industrial style, on trend design offering a solid, chunky frame to support the cube planters.

So why not bring a touch of the jungle into your indoor space and jump on the botanical bandwagon with Europlanters new planter and stand combos and liven up that dreary entrance with one or more of their simply stylish stands.



*This page, clockwise,
main image: Alderley, Kirley low,
Bramley broad and narrow*



*This page, clockwise,
top left: Oakley broad, Whistley,
Oakley narrow, Thesley*





*This page, clockwise,
top left: Portree, Kirley high,
Kingsley, Bramton*

*“Why, sometimes I’ve
impossible things*

Euromanter make th

believed as many as six
before breakfast”

the impossible, possible

Post Building

A new benchmark amongst London's most inspiring workplaces and set to become a prominent, iconic building

The Post Building is a transformation of a Royal Mail sorting office on New Oxford Street in Central London.

Previously the site had been derelict for over 20 years, but it has now been brought back to use, reconnecting the building with the city. This redevelopment is a mix of office, retail and residential areas and located at the intersection of five major roads in London.

In total, the mixed-use development accommodates eight floors for office use and seven floors for residential (including 100% of the required affordable housing provision on site). All this is above a variety of public uses including shops, cafés, galleries, and a GP surgery for the local community. The development also makes a significant contribution to the public realm by creating

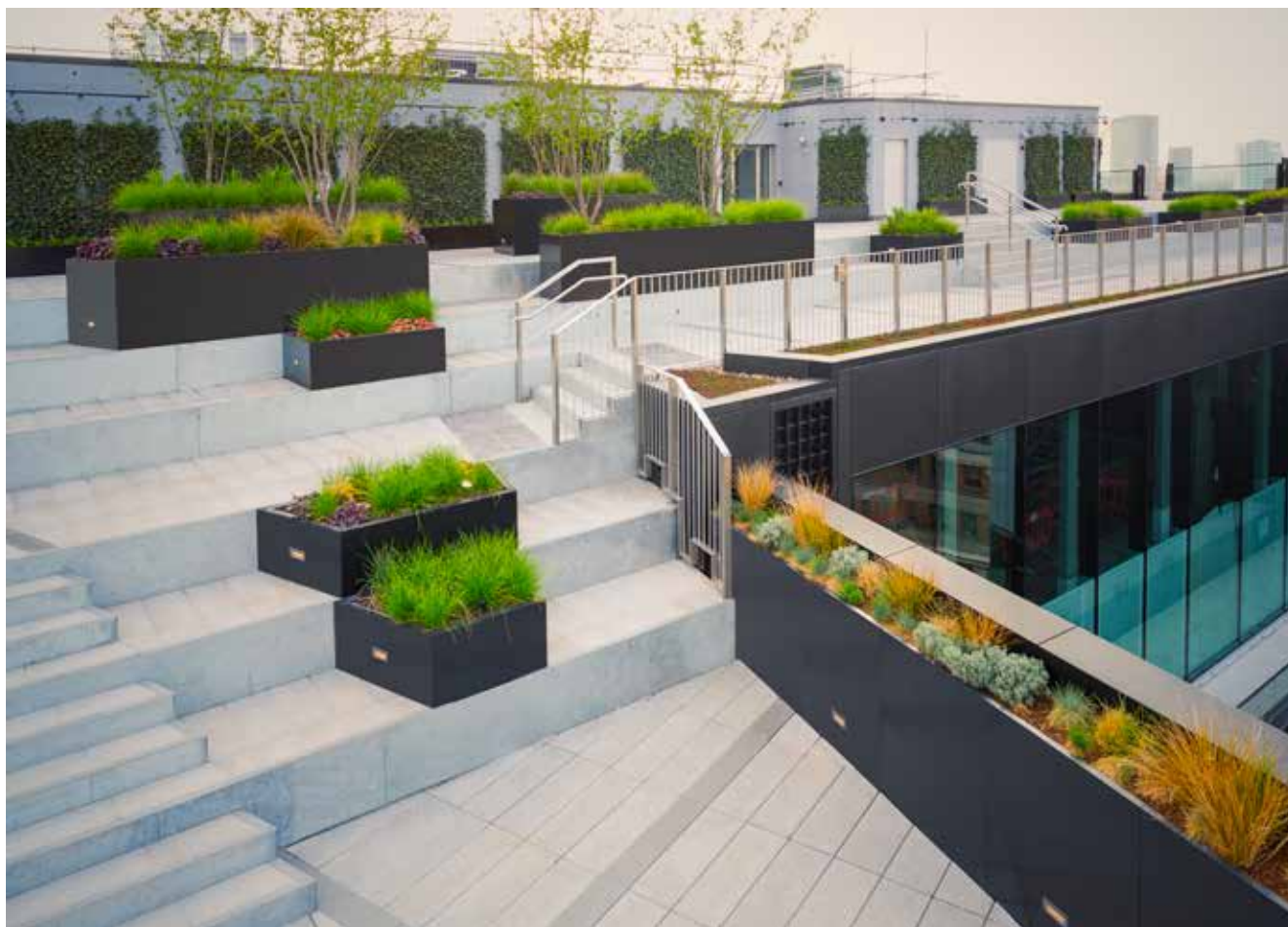
a new public space on Museum Street, reactivating the historic route of Dunn's Passage, and providing access to roof terraces and gardens.

Europlanters are proud to have been involved in this exciting project, supplying planters for the Residential Terraces, Gin Terrace, Herb Garden and Meeting Rooms. The installation team installed all seating and tables made from stainless steel and iroko timber for the "Meeting Room" areas and benches around the children's play area. The total of number of planters exceeded 200 with 194 planters supplied in RAL 9004 matt for all the terraces combined, and a further nine large planters for Dunns Passage.

Julie Wilkes, Director for Europlanters, commented: "Our track record in delivering high quality projects on time, is well established, and we are delighted to have been working with Goddards on this high-profile scheme".







*The Post Building.
A post-industrial
building of epic
scale and volume
in the heart of
creative London,
designed to liberate
inspired expression.
Nurturing productivity,
prosperity and
wellbeing.*



WATCH ON



Are GRP planters fire resistant?

With the demand for GRP planters increasing, and people being more aware of the need for fire safety, the knowledge of their fire performance is becoming a significant issue for many landscape architects and the like.

This particularly applies to interior GRP planters and those placed on a roof terrace or balcony. In simple terms regulations stipulate a fire break layer on the roof terrace like granite, ceramic or concrete pavements which will not burn should a fire break out. Materials placed above this layer should be resistant and have a slow burn rate or low spread of flame rate.

The question most commonly asked relates to the possibility the polymer itself igniting and spreading the flame. The most common cause of fires on a balcony is people smoking, using disposable BBQ's or arson.

The short answer to this question is, No, the polymer will not ignite on its own or from a cigarette or match. GRP composite by its very nature is inherently fire resistant but the properties can be enhanced by using a fire-resistant resin.

A Class II resin is commonly used where increased fire-resistant laminates are required. Planters made this way will self-extinguish when set alight using an accelerant or gas fuelled fire. They will not spread the fire, the plants and trees within the planters are more likely to be the cause of fire progression.

As with all issues in design there is always a compromise to be struck between the different material properties needed for a project. If fire resistance is absolutely critical, this will be more expensive than standard GRP however, FRP composites can often still be the most cost-effective solution. As a guide the introduction of a Class II resin will add about 10-12% to the overall costs.

If further resistance is required a Class I resin can be specified. This filled resin has greater fire-resistant properties but the main difference between Class I and II is the amount of smoke given off in the event of a fire. For exterior use Class I is considered excessive and is generally used for confined spaces (underground car parks, train stations etc.) or high risk situations like airports.

If you need any more information about GRP fire resistance, contact estimating@europlanters.com



Alderley Edge

Stunning views enhanced by Europlanters.

As part of a major renovation, this Alderley Edge roof terrace offering stunning views across the Cheshire landscape, was made much larger.

Europlanters manufactured several large corten effect GRP planters, a hidden storage bench and over 13m of GRP screening in this unique outdoor living space designed by David Keegan Garden Design and installed by Butler Landscapes.

The stunning GRP corten effect perfectly replicates the real thing. This effect takes time and patience to create at point of manufacture, but offers a great alternative without the complications of staining or weight of real corten.

The planters offer large raised beds of ornamentals and a host of herbs near the outdoor kitchen area. GRP

partitions create the ideal privacy screening.

Strategically placed lighting generates the perfect ambience in the evening, whilst the surrounding tree canopies facilitate wonderful bird songs.

The abundant planting scheme encourages wildlife along with wild flower gardens below the terrace.

Perfectly suited to entertaining and relaxing in the sun

This aesthetically pleasing area is perfectly suited to entertaining with the installation of the large outdoor kitchen area. The 3.5m canopy over the kitchen and the pergola offers shade from the

sun and protection from elements. The corten effect GRP planters and screening perfectly match a real corten pizza oven owned by the client.

This open area is the perfect sun trap for relaxing in the sun. The large glass skylight in the terrace floor offers brilliant sunlight to the home below.



WATCH ON





THESE PEOPLE ARE PART OF A TEAM



John

Managing Director and
product designer



Connor

Estimator



Paul

Development manager



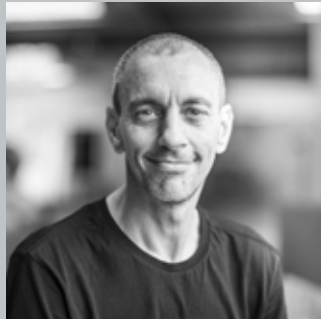
Fiona

Sales and logistics



Julie

Sales and Marketing



Andy

Delivery driver



Martyn

Production manager



Anthony

Sprayer

THAT MAKES YOUR PROJECT COME TO LIFE



Mariusz

Laminator



Jane

Customer care



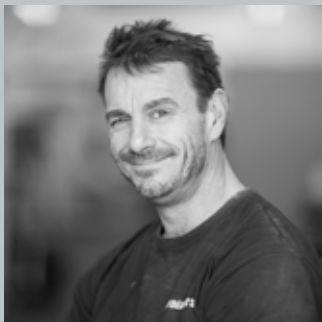
Oliver

Head of joinery



Cherrie

Accounts



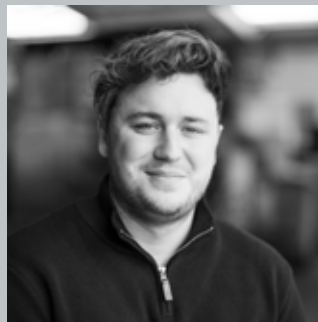
Craig

Finisher



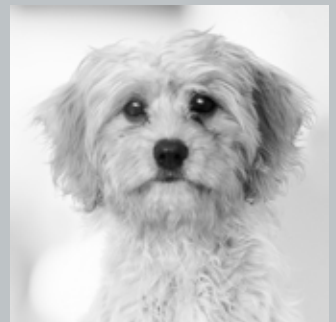
Jason

Warehouse and stock
controller



James

Architect and estimator



Archie

Happiness manager

and did you know
**WE OFFER A 10 YEAR GUARANTEE
ON ALL OUR GRP PRODUCTS?**

www.europlanters.com

Bishopsgate

Europlanters are proud to have been involved in one of Spitalfields most environmentally and socially responsible workplaces.

DUO, 280 Bishopsgate in Central London is a 13 storey structure in a prominent position on the East side of Bishopsgate.

A former Royal Bank of Scotland, now refurbished, with one of the main features of the building being its dual reception. This spans the whole length of the ground floor, linking the plentiful urban green spaces which connect Bishopsgate Square with the neighbouring Spitalfields market.

The Galliford Try construction group secured the contract to refurbish the building owned by Arax Properties. Europlanters worked with Ahmarra and Townshend Landscape Architects to create an expansive communal terrace on the 13th floor.

Ensuring consideration to sustainable construction, accoya timber was specified and used for all of the benches and seating. Glass Reinforced Plastic (GRP) was used for all the planters and Frosts Landscape Construction planted up with screening, beautiful foliage and specimen multi stem trees.

Europlanters supplied over 100m of planters in metallic paint RAL 1035 in a matt finish along with 30m of seating and two 'L' shaped storage benches with removable lids.

The project also included approximately 47m² of lawn edged with 27m² of 4mm thick, grade 316, stainless steel at 400mm high. Each section measured to line up exactly with the paving with 'L' shaped

storage bench seating on two corners.

We were delighted to be involved in a project that's achieved a BREEAM excellent rating and gold accreditation from the International WELL Building Institute.





Images courtesy of Townshend Landscape Architects



WATCH ON



The interview...



Remigio Baldoni

Townshend Landscape Architects

Landscape architect for
280 Bishopsgate, London

1. What inspired you to become a landscape architect?

I am from Perugia in Italy, a beautiful City surrounded by greenery. Growing up I thought that working and living in a green environment surrounded by nature is important for people's wellbeing. I discovered the landscape architecture profession promoted this through design, which led me to enrol in a course in Genova, that further inspired me to integrate nature with design in my future career.

2. What is the biggest challenge a landscape architect faces today?

This must be to design sustainably, through the use of reclaimed and low carbon materials, and to use more planting that is highly biodiverse, drought resistant and regenerative, ultimately creating places that work with nature and the environment. At Townshend Landscape Architects we work hard in the background to realise best sustainability potential on each project.

3. What was the biggest challenge on 280 Bishopsgate?

The project was a refurbishment, so from a technical point of view the challenge was working with the existing structure. More specifically incorporating the BMUs (building maintenance units/cleaning equipment tracks) into the floor of the roof terraces was complicated, so that the resulting space was useable for most of the year.

4. What was your brief for the project?

Managing a budget on a project that is first of its kind To create sufficient space for multiple uses, for example large gatherings, relaxing places, working spaces, space for planting, and yet keep the roof terraces as flexible as possible. This included elements such as power sockets for laptops, drainage, and so on. We were asked to consider the uses and visual feeling of another of our roof terrace designs on a nearby scheme, one that is visible from 280 Bishopsgate.



5. What inspired this design

The Client's brief was inspirational, they were both involved and interested in the whole design process, particularly in creating flexibility and in the character of the planting design.

Using modular paving, modular units for planting beds, and drawing on the pattern of building façade were important. Modularity is helpful for creating flexible spaces.

The planting was inspired by Mediterranean style gardens. We proposed the palette for the Client's approval – this included Olive trees, Lavender, Iris, Rosemary, Grasses, Sisyrinchium, Osmanthus and Achillea.

6. Why did you choose GRP?

We considered metal but GRP is also strong but more flexible, and it allowed for the modularity of the design. It can be put together, much like a jigsaw puzzle, onto pedestals that sit over the drainage layer. GRP is also light in weight, which helps with roof loading and the ease of installation. There is also little maintenance required, it simply needs some cleaning. GRP is durable, weather resistant, comes in any RAL colour, and crucially is more cost-effective for the modular units that we chose.

7. What do you think the project will look like in 10 years' time?

I think it will look great. The planting will be more mature, with the hard landscape and planters looking the same, if maintained to recommendations. The GRP planters have a life expectancy of more than 10 years.

8. How did you find working with Europlanters?

It was an easy and good relationship throughout. We did the initial technical design. Europlanters then produced excellent shop drawings. We discussed fixings, colours and more with them during the process. All in all, it was a great experience.

9. How close was the end project to the initial brief?

Quite close. We had good sessions with our Client, and was pretty much how we imagined it would be.

10. What is your favourite project designed by someone else?

I think Exchange Square by DSDHA is a good scheme. I like that it's well used by the public and look forward to seeing how it matures. I also think the ground level of the London Wall project by SpaceHub is a well-conceived scheme. Townshend Landscape Architects did the roof terraces on the building above the space.

11. Which landscape architect do you admire the most /why?

My biggest inspiration is an Italian landscape architect, Pietro Porcinai, who designed public parks and private gardens. I like the way he integrated nature into every project, and feel he was at the forefront of sustainable landscape design.

12. If you had a dream project to design, what would that be?

I love to design public realm generally, so it would be this genre. Maybe the whole of the South Bank as it has so much potential for improvement and gets a lot of use from the public.

13. What do you think is going to be the next big thing in landscape architecture?

What landscape architects do is relevant for people and nature. There is a growing movement to design with the community to incorporate local culture into schemes as well as to use more planting. I think both will become more prevalent in designs for the future.

BLOOMSBURY LONDON

Designed by Rebecca Heard and beautifully planted by Gavin Jones, this small contemporary roof terrace is used as a break out area for office staff.



DIDSBURY CHESHIRE

Working closely with a private client, this contemporary outdoor living space was designed and installed by Europlanters. Two individual areas merge harmoniously to create a unique dining experience



GRAND CANAL SQUARE DUBLIN

Specified by Greenscene Interiors, Europlanters manufactured bespoke giant, red, illuminating planters for a prestigious office block in Dublin's South Docklands.



SALFORD QUAYS MANCHESTER

With views of Old Trafford's Manchester United stadium, this roof terrace designed by Poppyhead Consultancy, has a selection of planters and raised planting beds for trees, shrubs and screening.





STATION SQUARE COLCHESTER

This indoor garden and lower courtyard was designed by Ground Control. Incorporating a unique open roof light, helps create an open-air atrium big enough to allow large trees to take advantage of the elements

STRATFORD LONDON

Frosts Landscapes were involved in the construction and planting of this screened roof garden with outstanding views of the London skyline. Europlanters manufactured and supplied the planter benches for this BALI award winning project.



SUNNINGDALE WINDSOR

Gavin Jones superbly planted this large patio area filled with a huge range of planters in various sizes

WHITECHAPEL LONDON

Europlanters were thrilled to work with Urban Planters Chelmsford on this exciting project. The finished courtyard has 16 large, rustic planting beds made from powder coated metal and iroko timber with matching tables and benches.



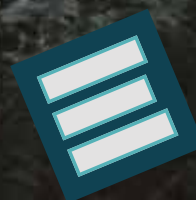
A dramatic, dark landscape photograph. In the foreground, a rough stone wall made of irregular grey stones runs across the frame. Behind the wall is a field of tall, dark grass. In the background, a large, dark mountain rises under a heavy, grey, cloudy sky. The overall mood is somber and rugged.

we deliver...

Whatever the weather, however far - we deliver



www.europlanters.com



Europlanters

FOLIO

www.europlanters.com



London Wall Place



Charlotte Street



Bollo Lane



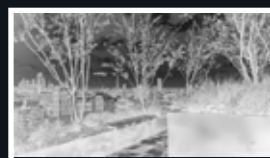
LCFC



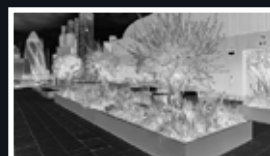
Clerkenwell



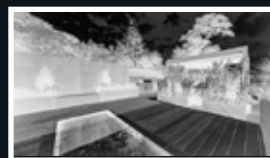
Turing Locke



Post Building



Bishopsgate



Alderley Edge